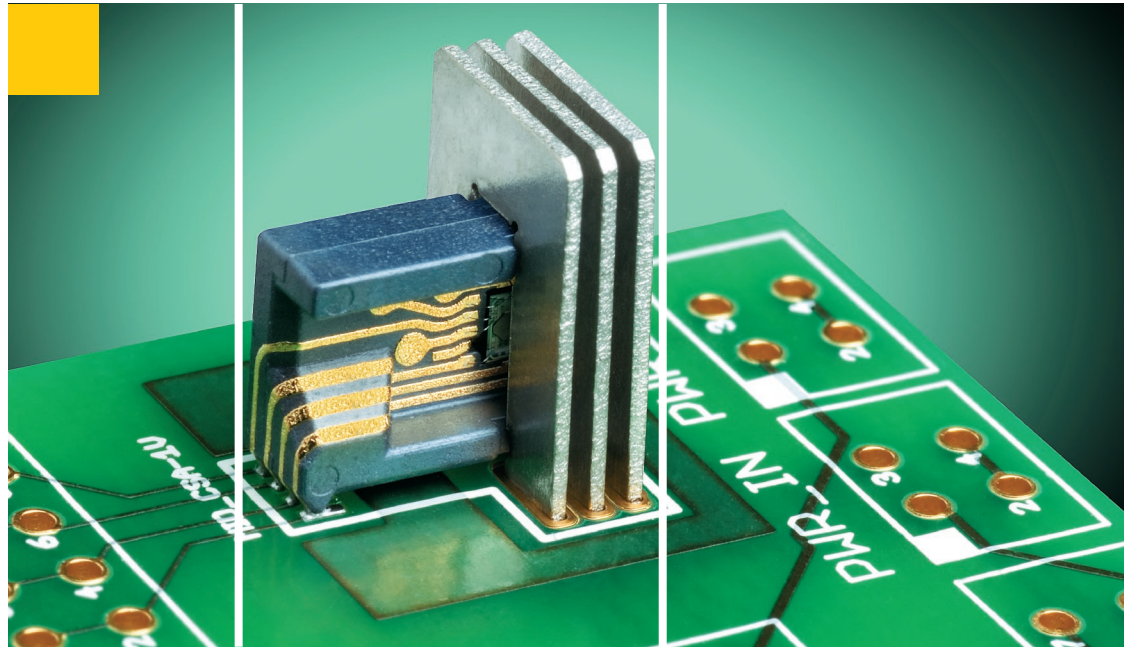


## Current Sensor – HARsens CUR



Sensors in MID-Technology by HARTING Mitronics

## Applications:

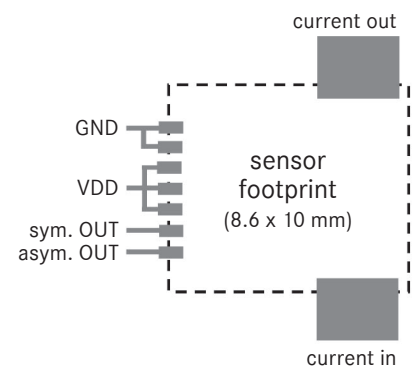
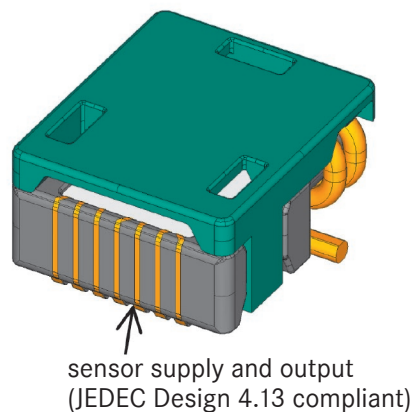
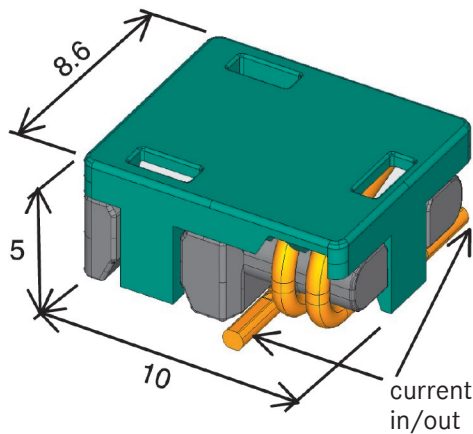
- Motor starter and servo drives
- Switching power supplies
- Battery chargers
- AC-DC converters

## Benefits:

- Safe galvanic separation between sensor and primary circuit
- Effective electrical shielding
- Confined magnetic field for low interference between AC phases
- Small sensor footprint:  $37 \text{ mm}^2$  (0.06 in<sup>2</sup>)
- High accuracy, max. error: 0.6 % FS
- Low power consumption: < 60 mW
- Convenient electric supply: 5 V
- Analog output: 100 mV/A
- Current range:  $\pm 5 \text{ A}$

## Housing:

- Material: LCP
- Mounting: SMT



## Anwendungen:

- Motorstarter und Servoantriebe
- Schaltnetzteile
- Batterieladegeräte
- AC-DC Wandler

## Vorteile:

- Sichere galvanische Trennung des Sensors vom Lastkreis
- Geringe Empfindlichkeit gegenüber elektrischen Störfeldern
- Begrenztes magnetisches Feld für geringe Phaseninterferenz
- Kleiner Flächenbedarf:  $37 \text{ mm}^2$
- Hohe Genauigkeit: 0,6 % FS
- Geringer Leistungsverbrauch: < 60 mW
- Standard Speisung: 5 V
- Analoger Ausgang: 100 mV/A
- Messbereich:  $\pm 5 \text{ A}$

## Bauform:

- Material: LCP
- Montage: SMT



People | Power | Partnership

For sales contact

## HARTING Mitronics AG

Leugenestrasse 10		CH-2500 Biel 6 – Switzerland/Schweiz
Phone Switzerland: +41 32 344 21 94		Telefax Schweiz: +41 32 344 21 79
Phone Germany: +49 571 88 96 189		Telefax Deutschland: +49 571 88 96 990 189
E-Mail: mit@HARTING.com		Internet: www.HARTING-Mitronics.ch